

Parent, carer and family support

Learning Links provides a range of support and resources to families and carers in situations that test the strength of relationships, resilience of siblings and endurance of primary caregivers including:

- Family psychological therapy
- Parenting programs
- Parent workshops

Professional development

Educational courses

Learning Links offers high quality training through a range of public and tailored courses. Professionals receive practical hands-on training that reflects current expert knowledge and industry standards. Topics include: ADHD, high functioning autism, behaviour, children's development, children's learning, children's well-being, communication and sensory processing.

Psychologist Registration Program

Learning Links offers a structured placement and supervision program for Provisional Psychologists which meets the requirements as specified by the Psychology Board of Australia.



CONTACT US

1300 003 900

mail@learninglinks.org.au

Alexandria (Support Office)

Suite 3, Level 1, 140 Bourke Rd
PO Box 6282
Alexandria NSW 2015
(02) 8525 8250

Bella Vista

6a/7 Meridian Pl
Bella Vista NSW 2153
(02) 8525 8260

Gledswood Hills

Suite 7, SOMA Wellness
7 Gregory Hills Dr
Gledswood Hills NSW 2557
(02) 8525 8270

Liverpool

Shop 2, 54-56 Macquarie St (North)
Liverpool NSW 2170
(02) 8525 8280

Maroubra

3rd Floor, Bowen Library
669-673 Anzac Parade
Maroubra Junction NSW 2035
(02) 8568 8200

Peakhurst

12-14 Pindari Rd
Peakhurst NSW 2210
(02) 8525 8222

 @learninglinksau  Learning Links

 @learninglinksau  Learning Links

LEARNINGLINKS.ORG.AU

learning links



Helping Kids Learn

HELPING KIDS LEARN



Does your child need
extra help learning?

We can help your child reach their full potential through our comprehensive range of support services including therapy, teaching and psychology.





ABOUT US

Learning Links is a not-for-profit charitable organisation with over 45 years of experience in helping kids learn. Our vision is to provide children and young people who have difficulties learning with the skills, services and family support that enable them to reach their full potential. We work with children, parents, carers, families and professionals across Sydney and NSW.

How can we help?

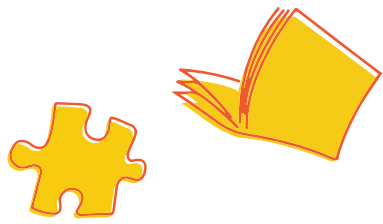
Our specialist professionals work with children and young people from 0 to 18 years who have learning difficulties or disabilities to address concerns with:

- Speech, language and communication
- Fine and gross motor development
- Literacy and numeracy
- Anxiety, depression, low self-esteem, social skills and behaviour
- Developmental delay, ADHD, dyslexia, dyscalculia, dysgraphia, high functioning autism, sensory processing issues

Our approach

We understand that every child is unique with different strengths and difficulties, and that each family has their own set of challenges and goals.

We tailor the best possible program for each child and offer families access to a caring and committed team of highly qualified experts across therapy, teaching and psychology.



OUR SERVICES

Assessments

A comprehensive assessment is an important first step in helping a child who is experiencing difficulties. The assessment will identify the child's learning strengths and needs, their preferred learning style, appropriate intervention and useful strategies for the home and classroom.

Learning Links provides a range of assessments, including: cognitive (IQ), academic, dyslexia (reading), dyscalculia (numeracy), special provisions, psychometric, speech and language pathology and occupational therapy.

Early intervention

The early years are crucial to a child's development and future. We can work with young children who are at risk of learning difficulties and are not reaching key milestones from an early age. We offer a full range of specialist services including psychologists, special educators and therapists.

Preschool: Learning Links runs a community based preschool in Peakhurst in Sydney's South. It is a unique inclusive program where children of all abilities participate in the same routines and play experiences.

Playgroup: Prep 4 Preschool is a Learning Links supported playgroup, providing a relaxed, safe and engaging environment where play activities are tailored to enhance the development of each child.

Speech and language therapy

Children who have difficulty learning may have trouble expressing themselves or understanding and following what others are saying. Speech and language therapy can help support and enhance a child's ability to learn and address:

- Pronouncing sounds, voice problems or stuttering
- Understanding and using language
- Following directions and answering questions
- Pre-reading skills

Occupational therapy

Children may have problems with their motor skills or organisational skills which can impact many basic life skills. Occupational therapy can help with:

- Playing, movement, coordination, dressing and posture
- Pencil grip, writing, cutting and holding objects
- Sensory processing – difficulty with sound, movement, vision, taste, smell, touch, pressure

Educational support

School can be very challenging for some children, particularly those with learning difficulties or disabilities. Our specialist teachers address the road blocks that prevent children from learning and tailor teaching methods to suit their learning style and achieve success. Our individual and group classes support with:

- Reading, writing, comprehension and spelling
- Primary and high school maths and numeracy
- Study skills and assignment strategies
- Dyslexia, dyscalculia, ADHD and high functioning autism

Psychological therapy

Some children struggle with emotional and social development which can impact on learning and friendships. Our psychologists work with children and families using evidence-based therapies to address concerns such as:

- Anxiety, depression and low self-esteem
- Poor social skills
- ADHD and difficulties making transitions

A referral from your GP is required if seeking to claim Medicare rebates through the Better Access to Mental Health Care program.